

**AVANT<sup>®</sup>**

# MAGAZINE

NEW AVANT e727 & e747

ENJOY THE NEXT LEVEL  
OF ELECTRIC-POWERED  
HEAVY WORK

PAGE 4

GT CAB NOW  
AVAILABLE FOR  
AVANT e527

PAGE 16

OPTITEMP<sup>®</sup> CUBE  
PROVIDES  
PORTABLE POWER  
WHEREVER YOU GO

PAGE 10



AVANT TECNO  
CUSTOMER MAGAZINE  
VOL. 1 / 2025



LEGUAN®

265

Straight  
to the point  
in just 95  
seconds.



Redefining  
all-terrain  
performance  
& efficiency.

**THE LEGUAN 265** sets a new benchmark for efficiency and performance in its class. Featuring a lightweight design and a compact length, rugged track system and the market's lowest centre of gravity, the Leguan 265 provides exceptional mobility and stability even in confined spaces and rough terrain.

Read more at [leguanlifts.com](http://leguanlifts.com)



## EDITORIAL

## AVANT GROWS ITS ELECTRIC OFFERING



**THE GLOBAL** off-the-road machinery market keeps on electrifying, and Avant wants to be the leader in this field with our compact loaders. We have made big investments in electric loaders, not only in the loader R&D, but also in our own battery development and manufacturing. Because of these investments, we can create products that are superior to the competition.

A great place to showcase our latest innovations has always been Bauma – the world's largest construction exhibition in Germany. This is the show where the whole construction machinery industry comes to show its innovations. Three years ago, we presented our third generation fully electric loaders here. The new e500 series models were the first ones to feature Avant's own unique batteries designed and manufactured by our latest subsidiary, Avant Power.

Now, we are back at Bauma, presenting two bigger electric loader models in the e700 series. The two new models are directed at slightly different customers, but both have top-of-the-line features that have not been available in the market before. The flagship model, Avant e747, is the first compact loader model in the world to boast a 47 kWh battery in this loader size class. The e747 is designed for heavy professional work and long shifts. Its bigger battery translates directly to longer working time with one charge, and this has been a big wish from our customers.

At Bauma, we are also showcasing our latest and greatest attachments making Avant the most versatile loader in the world.

Avant Power has also developed new mobile power units which will make working easier on distant work sites, where there is no electricity available, or it is too weak for charging machinery on site. The power units are easy to move on a trailer, and their rugged housing can take years of hauling from jobsite to another.

Leguan's new spider lift reaches new working heights – 26,5 meters. This very exciting lift completes the Leguan range. Higher lift height and more reach was necessary for many customers, and now we can offer that with the EDX user interface developed by Leguan. Ease of use, all-terrain capability and fast boom movements truly are Leguan's forte in the market.

We are very excited to present these new products to the public. Enjoy reading more about them in this issue of Avant Magazine. Hope to see many of you in Bauma.

**Jani Käkälä**  
CEO, Avant Tecno Oy

### Avant Tecno Customer Magazine 2025

Editor-in-chief: Saara Pakarinen, Avant Tecno Oy

Publisher: Avant Tecno Oy

Layout: Unfair Lean Marketing Oy, Tampere, Finland

Print: Offset Ulonen Oy, Tampere, Finland

Edition: 500

**AVANT®**

Ylötie 1, 33470, Ylöjärvi, Finland  
+358 3 347 8800  
[sales@avanttecno.com](mailto:sales@avanttecno.com)

## CONTENTS

Enjoy the next level of electric-powered heavy work .....	4
OptiTemp® Cube provides portable power wherever you go .....	10
Rapid or slower charging? .....	12
Electric Loaders: Debunking the Myths ..	14
GT cab now available for Avant e527 ....	16

### GT CAB FOR AVANT e527

Excellent vision & protection from the weather.  
Read more on page 16.



Efficient, quiet and reliable! .....	17
New Attachments .....	18
Forestry mulcher.....	19
Rotating HD Grapple .....	20
Collecting broom.....	21
Timber grab .....	22
4 in 1 bucket.....	23
XL Root Grapple 1450 & 1800 .....	24
XL Demolition Grapple Bucket 1450 & 1800 ..	24
Disc Spreader 1400.....	25
Artificial Turf Blade 3000 .....	25

Raw Power, Smooth Ride .....	26
------------------------------	----

Modern maintenance at the historical Widoioie Castle Estate .....	27
---	----

A new splendor for a historic villa .....	30
---	----

Year-round work for Krakow's beauty ....	32
--	----

Presence in Brazil strengthening fast ....	34
--	----

Avant Center Saue opened in Estonia ....	35
--	----



# ENJOY THE NEXT LEVEL OF ELECTRIC-POWERED HEAVY WORK

## AVANT e727 & AVANT e747

Presented at bauma 2025, our two new loader models will take the fully electric Avant e series to the next level. Get ready for Avant e727 and Avant e747!

### OUTSTANDING PERFORMANCE

The new Avant e747 is an exceptionally strong electric loader made for heavy work that requires raw power and durability.





**TWO YEARS AGO**, we introduced the renewed Avant e series to the world and the first loader models equipped with Avant Power's own batteries saw daylight. Avant e513 and Avant e527 went into production and changed the game in the e-loader market in terms of capacity, longer operating time, life, safety, sustainability, and affordable pricing. Now, these third generation fully electric loaders are getting more powerful siblings, and it's time to take a sneak peek at the e700 models behind the curtain: the Avant e727 and Avant e747.

"As we started to design the Avant e727, we wanted to make an electric loader of a larger size with great lifting power, and we wanted to make the pricing competitive", says Product Development Engineer **Lauri Rantanen**, who is responsible for the design of these new loaders.

The Avant e727 is an excellent machine for various lifting and transfer work. The lift capacity of the loader is 1400 kg. A comparable loader with a diesel engine would be the Avant 735i, from the perspective of power and usage. The driving speed is also in the same range.

"In transfer driving, this loader may even be quieter than our smaller electric models," Lauri says.

As the name suggests, Avant e727 has a 27 kWh Avant OptiTemp® battery – just like Avant e527. However, despite the larger frame, the operating time of the e700 series machine is close to that of the Avant e527 due to the optimization in the powertrain.

#### What's new: Powertrain

In powertrain, the clearest difference between Avant e727 and e527 lies in the number of electric motors and pump configuration. The e527 has two electric

motors: one for drive hydraulics and one for auxiliary hydraulics and steering. The powertrain of the new e727 includes only one electric motor, a variable displacement drive pump and two pumps for auxiliary hydraulics.

A totally new feature on the e727 is Autoshift which is designed to optimize the energy efficiency of the driveline. Together, Autoshift and the combination of the variable displacement pump and the two-speed drive motors enable optimal energy efficiency and driving comfort. The low noise level of the e700 series will also delight Avant users.

#### Autoshift works like a dream

There are three operating modes: the familiar low speed, eco, and high speed mode. A totally new feature, Autoshift, automatically shifts between two gears on the drive motors.

"Autoshift detects the speed and required torque of the machine and changes the gear when needed," Lauri says. "In applications such as load and haul, when you load material from a pile, the loader needs higher torque. The machine detects when the required torque is high enough, and the Autoshift automatically switches to low gear. And when you start hauling the load, the loader automatically shifts into high gear, where it uses less energy, and you can get to the next place faster."

For the operator, using Autoshift is also a comfort factor. You can focus on the task at hand – no need to switch from one mode to another and back when your need for torque and drive speed changes. It's as simple as driving a car with automatic transmission. In the long run, using Autoshift will affect energy consumption: the operating time

**"AVANT IS THE FIRST MANUFACTURER THAT HAS A BATTERY OF THIS CAPACITY AND A DIRECT ELECTRIC DRIVELINE IN SUCH A COMPACT LOADER SIZE CLASS."**

**Tuomas Färin**  
Commercial Product and Sales Manager

of the loader will be longer due to the Autoshift feature which is always on.

#### Avant e747: A robust machine for rough work

So, what can be said about the true star of the e series – the e747 with a 47 kWh battery? This model will become available later, after the Avant e727.

"Avant is the first manufacturer that has a battery of this capacity and a direct electric driveline in such a compact loader size class. Avant e747 is an ideal electric loader for various professional uses. Think construction or demolition sites where raw power and durability are necessities. Or property maintenance work, where you need a compact, effective and agile loader for full workdays", says **Tuomas Färin**, Commercial Product and Sales Manager at Avant.

Avant e747 is a loader with a direct electric non-hydrostatic driveline. The four electric drive motors and the motor for work hydraulics are all fully independently controlled. The auxiliary hydraulics is separated from the drive system. As each drive motor is controlled individually, traction control is very precise, and the loader is sensitive on soft surfaces. The new eWheel drive motors are specially designed for offroad compact machinery.

The fully electric drive line makes the e747 a perfect choice for professionals, guaranteeing low noise level and improved efficiency, which is reflected in the longer operating time and greater machine power.

"We are aiming for a very long operating time. This means you can work with less or no breaks throughout the day even though the work gets heavy," says Tuomas. →



## SHIFTING GEARS

Avant e727 introduces a totally new feature in Avant loaders: the Autoshift.

# AVANT e727

- A strong and user-friendly fully electric loader designed to be used especially in construction, horse stables, farming, landscaping, etc.
- Perfect for sites where the working radius is less than 2 km.
- Intended for running light to medium powered hydraulically rotating attachments.
- Two-speed drive system with new Autoshift feature (automatic shifts between the low and high gear).
- 3 kW onboard charging as standard; rapid charging as an option.
- GT cab as an option.
- Manufacturing begins on Q4/2025.



HEAVY-DUTY

This model will certainly not leave you cold, or the job unfinished. Avant e747 is a fully electric powerhouse for demanding professional use in property maintenance or construction & demolition.



AVANT e747

- A high-power fully electric loader for very demanding use. Designed especially for property maintenance, industry, and landscaping.
- Intended for running also high-power hydraulically rotating attachments.
- A perfect electric loader when working on a larger area with more than a 3 km radius.
- Strong eWheel drive motors guarantee optimal drive modes in all situations.
- GT cab with optional AC will be available.
- Manufacturing begins in 2026.



LIFT MORE

The new Avant e727 is a strong electric loader that lifts 1400 kg. Its pricing is competitive among the electric loader market, but also comparable against diesel loaders.

AVANT OPTITEMP® BATTERIES

Thermal management has traditionally been a challenge in batteries, but this problem was overcome by the Avant Power battery factory a few years ago. All our new e-loader models have extremely safe Li-ion batteries developed and manufactured by Avant Power. They utilize globally unique Avant OptiTemp® immersion cooling technology, which cools or heats the battery when needed, keeping the temperature optimized in all conditions.

“Our immersion cooling technology has higher heat transfer capability than air cooling. Immersion cooling enables

great energy density and makes batteries very safe. It also makes our batteries very compact and robust,” says **Mikko Piepponen**, COO of Avant Power.

Avant e727 has a 27 kWh battery (44 V) – the same battery as in Avant e527.

The flagship model Avant e747 will have a totally new 47 kWh battery (51 V), offering 74% more capacity than the 27 kWh battery. Avant is the first manufacturer that has a battery of this capacity in such a compact loader size class. The increased battery voltage (51 V) improves power and efficiency while remaining a low voltage system (below 60 V). ■

AVANT E SERIES MODELS TECHNOLOGY AND PERFORMANCE: A COMPARISON

Loader model	Avant e513	Avant e527	Avant e727	Avant e747
Electric motors	2	2	1	1 + 4 eWheel drive motors
Hydraulic drive pumps	1	1	1	0
Auxiliary pumps	1	1	2	2
Hydraulic drive motors	4	4	4	0
Electric drive motors	0	0	0	4
Electric motors and controller cooling	Air-cooled	Air-cooled	Liquid cooling (electric motor + controller)	Liquid cooling (main electric motor + controller + 4 drive motors)
Battery capacity and voltage	13 kWh / 44 V	27 kWh / 44 V	27 kWh / 44 V	47 kWh / 51 V
Lift capacity	900 kg	900 kg	1400 kg	1400 kg
Auxiliary hydraulics	30 l/min / max. 185 bar	30 l/min / max. 185 bar	Max. 35 l/min / max. 200 bar (preliminary)	Max. 60 l/min / max. 225 bar (preliminary)
Drive modes	Low / eco / high	Low / eco / high	Low / eco / high (Autoshift)	Low / eco / high



# OPTITEMP® CUBE PROVIDES PORTABLE POWER WHEREVER YOU GO

Avant Power launches a unique mobile power unit at bauma 2025.

**AVANT TECNO'S SUBSIDIARY** Avant Power started manufacturing batteries for our electric loaders in 2024. They have since produced over 500 battery packs that enable a full day of work with a single charge for the Avant e-series loaders.

Quickly gaining popularity, the OptiTemp® batteries signaled a new era for electric loaders in terms of capacity, longer operating time and lifecycle, safety, sustainability, and affordability.

Now we're taking the OptiTemp® concept further by introducing Avant Power's first mobile and compact energy storage solution: the OptiTemp® Cube product line.

## Mobile power for any application

Available later in 2025, the OptiTemp® Cube 50 is Avant Power's answer to a growing demand for portable energy storage solutions in the loader and work machine market.

It is an ideal companion for Avant's e-series electric loaders. The OptiTemp® Cube 50 can provide the 27 kWh OptiTemp® battery with two full charges, and four charges for our 13,5 kWh battery.

"As our battery production increases and more e-series loaders are being adopted, we have discovered that the OptiTemp® technology works equally well within portable energy solutions. Our loaders are often used at work sites without charging facilities. A portable power unit is ideal for providing more juice at construction sites, remote outdoor locations, forests, events, and many other applications. They are also great accessories for rental and leasing companies," Avant Power's COO **Mikko Piepponen** highlights.

While similar solutions exist, the OptiTemp® Cube is a unique product thanks to its immersion cooling technology, robust structure, and reliable performance in any environment.

"The OptiTemp® Cubes are like our loaders in many respects: they are compact, durable, highly portable, quiet, and extremely safe," Piepponen says.

## OptiTemp® guarantees premium performance

Despite their compact size, OptiTemp batteries have a high power density that enables premium capacity and rapid charging. The OptiTemp® thermal management system keeps temperatures optimized when the battery is in use or plugged into a charger.

All cells are surrounded by a cooling liquid in the battery's submersible structure. The immersion cooling system controls temperature and guarantees optimized performance in both freezing and hot weather. In cold conditions, the battery automatically pre-heats before use, and the temperature management system maintains operating temperature during use. The system also ensures that the battery won't overheat, making it extremely safe to use.

"While the OptiTemp® Cube 50 is intended primarily as a companion for Avant loaders, the upcoming OptiTemp® Cube 100 will provide portable energy for all kinds of machinery, including mining and forestry. These products will pave the way for our larger solutions in the future. Stay tuned!" Piepponen hints. ■



## OPTITEMP® CUBE 50

- **Dimensions:** 120 x 80 x 116 cm (L x W x H)
- **Weight:** 700 kg
- **Protection:** IP54
- **Capacity:** 50 kWh, nominal voltage 400 VDC
- **Input:** Type 2, 220–250 VAC, 3,3 kW
- **Output for Avant charging:** 48 VDC, 150 A
- **Output for external socket:** 230 VAC, 10 A, 50 Hz
- Internal protection for overload, overheat, short circuit, low battery
- Readiness for bidirectional charging

"THE UNIT IS IDEAL FOR PROVIDING MORE JUICE AT CONSTRUCTION SITES, REMOTE OUTDOOR LOCATIONS, FORESTS, AND EVENTS."

Mikko Piepponen  
COO, Avant Power





# RAPID OR SLOWER CHARGING?

Choose the right charging method for your new e-series Avant depending on how and where you use the loader.

**FIRST, CONSIDER WHERE** the loader will operate and how quickly you need to charge it. Standard equipment allows for slower charging, while fast charging requires some options. For lighter use, the loader's on-board 3 kW charger suffices. However, for demanding professional use, we recommend rapid charging, either with the loader's optional on-board 9 kW charger or with Avant's own DC rapid charging station.

## STANDARD CHARGING

New e-series loaders are equipped as standard with a 3 kW on-board charger. This charger brings the Avant e513's 13 kWh battery to 80% capacity in less than three hours, while charging the 27 kWh battery of Avant e527 takes about five hours and forty minutes. Your e-series loader includes as standard a charging cable with 1-phase Type 2 ↔ Schuko (230 V) power plugs, enabling 3 kW charging capacity from a standard Schuko (8A max current) or Super-Schuko socket (16A max current).



## RAPID CHARGING: TWO OPTIONS

### 1 On-board 9 kW charger

A new option for the e-series is the 9 kW on-board charger. It significantly reduces the charging time compared with the standard 3 kW charger (to about one-third). This 9 kW option provides virtually the same charging capacity and speed as Avant's 400 V / 16 A rapid charging station.

The standard charging cable for electric Avants provides a maximum charging capacity of 3 kW. This is why you will also need one of the following options in order to reach the maximum charging capacity of the 9 kW on-board charger:

**3-phase CEE ↔ Type 2 charging cable (16 A / 400 V socket). Charging capacity: 9 kW.** This portable option is ideal if the loader is frequently moved between work sites. Product number: A464547.



**Wall-mounted charging station (Wallbox). Charging capacity: min. 9 kW.** This is an excellent choice if the loader is usually charged in same place. Easy and safe to use. Product number: A464548.



**3-phase Type 2 ↔ Type 2 charging cable. Charging capacity: 9 kW.** This cable enables charging at all public charging stations equipped with a Type 2 socket. Product number: A464549.



### 2 DC rapid charging station

For demanding professional use requiring rapid charging during the workday, Avant's own DC rapid charging station is a good solution. This requires two options for the loader: the DIN 320 3-phase charging inlet (product number: A464123) and the rapid charging station itself, which includes two fixed cables. One cable is connected to the loader's rapid charging inlet A464123, and the other one to a 3-phase wall socket (with either a 16 A or 32 A fuse, depending on the station's charging power).

There are two models available: a 400 V / 16 A station and a more powerful 400 V / 32 A station, capable of charging the Avant e527 in just over an hour under optimal conditions, significantly extending your daily operating hours.



## CHARGING OPTIONS & TIMES (10%-80%)

Charger	Avant e513	Avant e527
On-board charger 3 kW (standard)	2 h 50 min	5 h 40 min
On-board charger 9 kW (option)	1 h 10 min	2 h
Rapid charger 400 V / 16 A (option)	1 h 10 min	2 h 10 min
Rapid charger 400 V / 32 A (option)	1 h 10 min	1 h 10 min

Charging time is affected by prevailing conditions and temperature. Charging times are indicated from 10% to 80% of the battery's available charge level (SOC).

## UPGRADE YOUR e5 OR e6 LOADER WITH AVANT'S NEW BATTERY

**DOES YOUR OLD** electric loader need a new lease on life? Now you can affordably upgrade your Avant e5 or e6 model with cutting-edge battery technology.

The Avant OptiTemp® battery pack (13 kWh), manufactured by the Avant Power battery factory, is now available as a retrofit for all Avant e5 and e6 loaders.

This retrofit kit significantly extends the lifespan of your e5 or e6 loader — a worthwhile investment if the loader itself is in good shape but the battery is weak. The retrofit kit comes with a warranty of three years or 900 charging cycles.

Contact Avant sales for more information.





# ELECTRIC LOADERS: DEBUNKING THE MYTHS

What can an electric Avant loader truly do? How long can it operate before needing a recharge? Avant's Commercial Product and Sales Manager **Tuomas Färlin** addresses some misconceptions about electric machines.

MYTH

**AN ELECTRIC LOADER ONLY RUNS FOR AN HOUR OR TWO.**

"That's simply not true. I personally tested an Avant e527 in -9°C, covering a half-marathon distance of 21 km in 3 hours and 11 minutes. With a fully charged battery, the e527 operates for approximately 6 hours, while the e513 runs for about 3 hours when using attachments with lower power demands."

MYTH

**CHARGING TAKES FOREVER. LUNCHTIME IS NOT ENOUGH FOR THAT.**

"If you use the **standard 3 kW internal charger** with a Type 2 socket during a 1-hour lunch break, you can gain up to 45 minutes of more operating time. A complete charge (0–100%) takes 8 hours and 30 minutes for the e527, and 4 hours and 50 minutes for the e513. We now offer an **9 kW internal fast charging** option via the loader's Type 2 charging point. This option charges the machine three times faster than the standard 3 kW charger, taking only 2

hours and 45 minutes (e527) or 1 hour and 40 minutes (e513) for a full charge. Lunchtime charging with this option gives you over 1 hour extension to work time. Using Avant's **DC fast charging station**, a full charge (0–100%) takes 2 hours and 40 minutes for Avant e527, and just 1 hour and 30 minutes for the e513. Lunchtime charging with this option is as quick as using the 9 kW fast charging."

MYTH

**YOU CAN'T USE HYDRAULIC ATTACHMENTS WITH ELECTRIC LOADERS.**

"Absolutely you can. Both the e527 and e513 loaders have a hydraulic output of 30 l/min, compatible with most Avant attachments. Naturally, using power-hungry hydraulic attachments alongside driving will impact battery life. As a rule of thumb, an attachment demanding 30 l/min hydraulic output (e.g. Lawn mower 1500) will halve the battery usage time compared to light bucket work. A lighter hydraulic attachment (e.g. Rotary broom 1100) consumes about 25% more battery than light bucket work."

MYTH

**THERE'S NO CAB AVAILABLE FOR THE E SERIES.**

"The GT cab is now available as an option for the e527 model, and it will be available for the e727 later this year."

MYTH

**THE LOADER WON'T START IN THE COLD.**

"Avant OptiTemp® battery technology ensures the loader is ready to operate in any weather conditions. When connected to a charger, the intelligent battery maintains an optimal operating temperature, even in freezing conditions. The battery is automatically heated or cooled during operation and charging, adapting to the ambient temperature."

MYTH

**AN ELECTRIC LOADER IS A FIRE HAZARD.**

"Safety is one of the most important features of Avant OptiTemp® batteries. The cells are immersed in a liquid that protects the battery even in the unlikely event of failure. All cells inside the battery are protected by fuses on several levels. Thanks to immersion cooling technology and multi-lever protection, the risk of the loader's battery catching fire is virtually non-existent."

## BELOW FREEZIN'

Last year, Tuomas Färlin did a 3-hour test drive with an Avant e527 in -9°C, with his beard covered in frost. "Back then, the GT cab was not available for the e527. Now it is."



## SOME E-SERIES OPERATING TIMES

Task & attachment	Avant e513 13 kWh battery	Avant e527 27 kWh battery
Lawnmowing (Lawn mower 1500)	1.5 hours	3 hours
Light brushing (Rotary broom 1500)	2 hours	4 hours
Moving and handling pallets (Pallet fork)	3 hours	5–6 hours
Moving soil (General bucket 1150)	3 hours	5–6 hours
Indoor demolition (Demolition grapple bucket 900)	2–3 hours	5–6 hours

THERE. BUSTED.





## EXCELLENT VISIBILITY

The GT Cab protects you from the weather while providing an excellent visibility on your surroundings.

## GT CAB NOW AVAILABLE FOR AVANT e527

Providing protection from rain, wind, and snow, the GT cab is a highly requested new option to the e series.

**THE GT CAB IS NOW** available as an option for the electric Avant e527. Just like the diesel loader GT cab, the new version for the e527 offers a remarkably quiet and spacious interior, excellent all-around visibility, and cozy warmth in winter. Also, the pricing is roughly the same, and you will find nearly the same options available, including work light kits, road traffic light kits, a variety of seat options, and a Bluetooth radio.

### Instant warmth

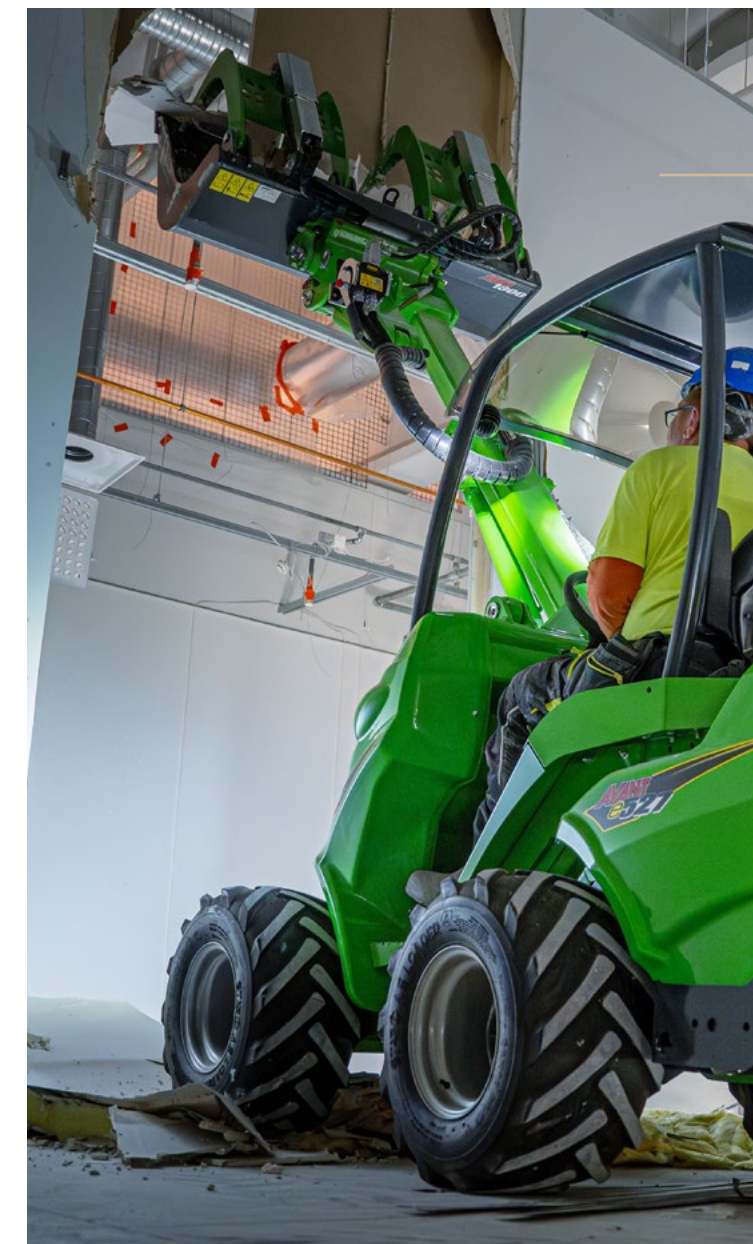
The new GT cab has a 2.5 kW electric, emission-free heater. Flick the switch, and hot air immediately begins to fill the cab, rapidly warming the interior.

The primary difference between the diesel and e series GT cabs is in preheating with the timer function. Preheating heats the cab nice and warm at the right time. With simultaneous charging, you also keep the battery charged.

The GT cab will become available also for the e727 later this year. The Avant e527 GT cab does not include the A/C option, but it will be available for the e700 series cabs. ■

# EFFICIENT, QUIET AND RELIABLE!

Finnish demolition and drilling contractor Tampereen Porausteam uses the electric Avant e527 in interior demolition. The long operating time and price-quality ratio of the loader impressed the company.



**WHEN TAMPEREEN PORAUSTEAM** replaced their old Avant e6 with a new Avant e527, the new loader quickly showed its strengths in demolition work inside a shopping centre.

"The e527 has a lot of power, and the battery life is great – significantly better than in the previous model. We have never run out of power in the middle of the working day," says CEO **Sakari Haapaniemi**.

The Avant e527 features a top-quality 27 kWh Avant OptiTemp battery manufactured by Avant Power in Finland. The capacity is now doubled compared to the predecessor, the Avant e6 loader. Avant's own state-of-the-art battery production guarantees the best price in relation to battery capacity.

"The price was almost the same as the price of the Avant e6," says Haapaniemi.

## SUPER VERSATILE

Demolition work and waste removal was easy with the **Demolition grapple bucket** and Pallet fork, while the Disc Scraper removed carpets. The Avant e527 accomplished this without emissions or too much noise.

Inside the shopping center, the electric loader spared the driver, the shopping center staff and customers from exhaust fumes. The e-loader's combination of efficiency, agility and zero emissions is unbeatable.

"And it doesn't make noise, so the only noise comes from the work itself."

### Few defects, easy maintenance

For the past 10 years, Tampereen Porausteam has always had at least two Avant loaders, mainly for demolition work.

"The best things about Avant are reliability and low failure rate. If we've needed to replace some wearing parts, we have always received spare parts at a day's notice, and the maintenance really works," says Haapaniemi.

After six years of experience with Avant's electric loaders, the CEO is particularly pleased with the small number of maintenance items. "We have come a long way with just greasing." ■



# NEW ATTACHMENTS

## NEW ATTACHMENTS

Want to know the latest in Avant attachments? Here is an ample selection of complete novelties and renewed attachments for a variety of different jobs. All attachments are available now. Enjoy!



Photo: STT-Lehtilauva, Heikki Saukkomaa

### SAVING THE GAME

Emergency on the field? The Artificial Turf Blade 3000 to the rescue! Avant loaders saved a UEFA Conference League match (HJK Helsinki vs. Aberdeen) from stopping completely, as a snowstorm hit the pitch in Finland in 2023. This made news around the world, and BBC Sport Online referred to Avant as “The player of the match”. The attachment on the image was a prototype being tested.



**THE FORESTRY MULCHER** is an efficient attachment for clearing bushes, brushwood and similar vegetation. It can also cut and crush small trees and grind small tree stumps above ground level.

The mulcher features direct hydraulic drive: a hydraulic motor is mounted on the rotor which is equipped with durable carbide teeth. There is a hydraulically operated hood in front of the rotor. With the hood open, you can cut down standing trees and brush. When the hood is closed, it prevents material from ejecting and improves mulching.

The mulcher is equipped with a horizontal push bar in the front. It guides the material that is being cut. With the push bar, you can also move and turn fallen trees and branches.

When working with the Forestry mulcher, an enclosed cab (GT, DLX or LX) is mandatory on the loader, due to the risk of material ejecting from the mulcher.

#### TECHNICAL INFORMATION

Working width	1350 mm
Total width	1670 mm
Number of blades	27 pcs
Length	830 mm with push bar, 610 mm without push bar
Height	960 mm with push bar, 530 mm without push bar
Rotor rotating speed	2000 rpm (at 65 l/min oil flow)
Oil flow range	60–70 l/min
Weight	440 kg
Product no	A457772

#### OPTIONS

- Knife type cutting blade A450266
- Hydraulic oil cooler A458046, for very demanding conditions (this option also requires the optional Opticontrol® on the loader)

#### COMPATIBILITY

✔ Compatible    ⚙️ Adaptable    ✖ Incompatible

220	225	423	520	523	528	530	635	635i	640	640i	645i	650i	735i	745	750	755i	760i	845	850	855i	860i	e513	e527
✖	✖	✖	✖	✖	✖	✖	✖	✖	✖	✖	✔	✔	✖	✔	✔	✔	✔	✔	✔	✔	✔	✖	✖

Watch video at  
[avanttecono.com](https://avanttecono.com)







# ROTATING HD GRAPPLE

AVAILABLE NOW

**THIS HEAVY-DUTY GRAPPLE** can handle timber like Avant's Timber grabs do, but thanks to its sharp claws, the Rotating HD Grapple can also be used to pick up stones, roots and smaller stumps, or to remove bushes and other vegetation. The grapple mounts directly on the attachment coupling plate of the loader. There are two HD Grapple models available: one with a hydraulic motor + slewing bearing, allowing unlimited (continuous) rotation in both directions, and one without a hydraulic rotorator. With the HD Grapple with a hydraulic rotorator, we recommend the optional Opticontrol® for operating the grab opening/closing and rotation (this also requires a 6- or 8-function joystick on the loader).



### TECHNICAL INFORMATION

Rotation type	No rotation	Hydraulic
Rotation	-	Unlimited 360°
Grapple opening diameter	1340 mm	1340 mm
Grip area	0,2 m²	0,2 m²
Oil flow range	10–20 l/min	10–20 l/min
Weight	160 kg	240 kg
Product no	A436473	A466711

### COMPATIBILITY

✔ Compatible    ⊕ Adaptable    ✖ Incompatible

220	225	423	520	523	528	530	635	635i	640	640i	645i	650i	735i	745	750	755i	760i	845	850	855i	860i	e513	e527
✖	✖	⊕	⊕	⊕	⊕	⊕	✔	✔	✔	✔	✔	✔	✔	✔	✔	✔	✔	✔	✔	✔	✔	⊕	⊕



# COLLECTING BROOM

AVAILABLE NOW

**THE COLLECTING BROOM IS** designed for sweeping hard surfaces such as asphalt, concrete, tiling and paving. It is an excellent attachment for cleaning yards, sidewalks and parking lots etc. There are now two models available: the familiar 1100 mm wide version and **the new 1500 mm wide model**. The broom is equipped with three support wheels and the Optifloat® quick attach system which allows

both vertical and sideways floating of the broom and guarantees efficient sweeping also on uneven surfaces. A collector box is mounted in front of the broom, and emptying the box is hydraulic. A water spraying system for dust binding and one side brush are available as an option package (both in the picture).

### TECHNICAL INFORMATION

Collecting broom	1100	1500 (NEW)*
Broom width	1100 mm	1500 mm
Total width	1375 mm	1775 mm
Oil flow range	30–35 l/min	35–40 l/min
Collector box volume	80 l	110 l
Water tank volume	60 l	60 l
Weight without options	286 kg	324 kg
Weight with side brush	340 kg	
Weight with options (water spraying system and side brush)	334 kg	382 kg
Product no, without options	A36883	A465821
Product no, with options (water spraying system and side brush)	A426231	A465948

### OPTIONS

- Side brush (one side brush possible), A35698
- 1100 model: Water spraying system, with 60 l water tank, A37431
- 1500 model: Water spraying system, with 60 l water tank, A466019

The optional Opticontrol® is recommended on the loader with a water spraying system. The water spraying system and side brush are not available for 200 series loaders.

\*The new Collecting broom model (1500 mm) is compatible with Avant's 500 series and larger loaders. Without options, this model can also be used with a 400 series loader.

### COMPATIBILITY

✔ Compatible    ⊕ Adaptable    ✖ Incompatible

	220	225	423	520	523	528	530	635	635i	640	640i	645i	650i	735i	745	750	755i	760i	845	850	855i	860i	e513	e527
1100	✔	✔	✔	✔	✔	✔	✔	⊕	⊕	⊕	⊕	⊕	⊕	⊕	⊕	⊕	⊕	⊕	⊕	⊕	⊕	⊕	⊕	⊕
1500	✖	✖	⊕	⊕	⊕	✔	✔	✔	✔	✔	✔	✔	✔	✔	✔	✔	✔	✔	⊕	⊕	✔	✔	⊕	⊕





# TIMBER GRAB

RENEWED & STRONGER!

NEW VERSION AVAILABLE NOW

**THIS VERSATILE GRAB** is designed for transporting and loading of tree trunks, branches, kerb stones etc. The rotating grab allows transporting also lengthwise so that you can pass through narrow places with long logs – a feature that comes very handy when working in dense forest.

The renewed version of the grab is stronger with a maximum load of 1300 kg. It is also suitable for heavier construction work and compatible with the Avant 400–700 series loaders. The Timber Grab now has an updated arborist kit as standard. The new, wider tooth plate gives you a better grip on the tree you are lifting, and the renewed wiring harness improves both comfort and safety.

The Timber Grab is available either with a hydraulic rotator or as a freely rotating version.



## 4 IN 1 BUCKET

NEW VERSION AVAILABLE NOW

**THIS EFFICIENT MULTI-PURPOSE** bucket can be used as a normal bucket, a dozer blade, a leveller, or a grab. It is an all-round tool for landscaping and ground care – suitable for many different jobs at different stages on the work site.

There are eight different models available. **The newest models are the smallest ones, 1150 mm and 1300 mm.** The new buckets come with a straight edge as standard. If you need a small bucket with teeth, there are holes for five optional bolt-on teeth on the edge of the bucket.

### TECHNICAL INFORMATION

Edge	Width	Volume	Weight	Product no
straight*	1150 mm (NEW)	235 l	207 kg	A462542
straight*	1300 mm (NEW)	270 l	221 kg	A457723
straight	1450 mm HD	300 l	246 kg	A428472
straight	1600 mm HD	330 l	257 kg	A36906
straight	1800 mm HD	370 l	286 kg	A446413
teeth	1450 mm HD	300 l	258 kg	A428508
teeth	1600 mm HD	330 l	267 kg	A37248
teeth	1800 mm HD	370 l	300 kg	A446873

\* bolt-on teeth available as an option (product no. A48608 for one tooth - 5 pcs needed!)

### OPTIONS

- Teeth protection plate 1150 mm, A420132
- Teeth protection plate 1300 mm, A417320
- Teeth protection plate 1450 mm, A417321
- Teeth protection plate 1600 mm, A419977
- Teeth protection plate 1800 mm, A446914

### COMPATIBILITY

✔ Compatible    ⚙️ Adaptable    ✖ Incompatible

220	225	423	520	523	528	530	635	635i	640	640i	645i	650i	735i	745	750	755i	760i	845	850	855i	860i	e513	e527
✖	✖	✔	✔	✔	✔	✔	✔	✔	✔	✔	✔	✔	✔	✔	✔	✔	✔	✔	✔	✔	✔	✔	✔

### TIMBER GRAB TECHNICAL INFORMATION

Rotation type	Freely rotating	Hydraulic rotation
Grapple opening diameter	1223 mm	1223 mm
Grip area	0,16 m²	0,16 m²
Weight	150 kg	170 kg
Max. load	1300 kg	1300 kg
Product No	A462525	A462524

The optional Opticontrol® is recommended with the grab with a hydraulic rotator, for operating the grab opening/closing and rotation (requires also 6- or 8-function joystick on the loader).

### OPTIONS

- Lock valve, mounting kit, on grab cylinder, A436627
- General bucket kit, grab mounted, A481528
- Gravel bucket kit, A481532
- Extra tine kit, A481533
- Padded stone grabbers, A429742

### COMPATIBILITY

✔ Compatible    ⚙️ Adaptable    ✖ Incompatible

220	225	423	520	523	528	530	635	635i	640	640i	645i	650i	735i	745	750	755i	760i	845	850	855i	860i	e513	e527
✖	✖	✔	✔	✔	✔	✔	✔	✔	✔	✔	✔	✔	✔	✔	✔	✔	✔	⚙️	⚙️	⚙️	⚙️	✔	✔





WITH THIS **VERSATILE** attachment, you can handle timber and various types of debris, or tear roots from the ground. The narrow tips of the strong tines penetrate the ground and piles of twigs easily, which is useful for arborists and other tree industry professionals. When feeding logs or branches to

Model	1450	1800
Width	1450 mm	1800 mm
Weight	350 kg	400 kg
Product no.	A469871	A465315

## XL ROOT GRAPPLE 1450 &1800

a woodchipper, soil and debris drop to the ground between the bars, keeping the chipper clean. Designed for the 700 and 800 series loaders, the new XL Root Grapples have a very sturdy construction. The hydraulic cylinders and hoses are well protected with metal guards, which is good when working in brushwood.

### COMPATIBILITY

	1450	1800
220	✗	✗
225	✗	✗
423	✗	✗
520	✗	✗
523	✗	✗
528	✗	✗
530	✗	✗
635	+	+
635i	+	+
640	+	+
640i	+	+
645i	+	+
650i	+	+
735i	✓	+
754	✓	+
750	✓	+
755i	✓	+
760i	✓	+
845	✓	✓
850	✓	✓
855i	✓	✓
860i	✓	✓
e513	✗	✗
e527	✗	✗



THIS **BUCKET TYPE** disc spreader is designed for spreading gravel on a variety of areas from narrow corridors to large parking lots. With a maximum spreading width of 8 metres, you can sand large areas quickly and effectively. All functions of the Disc Spreader, including spreading amount and width adjustment, are

Oil flow range	40–80 l/min
Width	1430 mm
Length	1060 mm
Spreading width	1–8 m
Volume	650 l
Weight	350 kg
Product no.	A462012

## DISC SPREADER 1400

controlled from the cab with the switches of the Opticontrol®. The spreader's display shows the spreading amount and width on a scale of 1–6, the operating mode (ON/OFF), and the hours of operation. The mixing shaft of the spreader prevents blockages and improves the flow of the material in the spreader.

### OPTION

- Cover A470165

This attachment requires the optional Opticontrol® for the loader.

### COMPATIBILITY

220	✗
225	✗
423	✗
520	✗
523	✗
528	✗
530	✗
635	+
635i	+
640	+
640i	+
645i	+
650i	+
735i	✓
754	✓
750	✓
755i	✓
760i	✓
845	✓
850	✓
855i	✓
860i	✓
e513	✗
e527	✗



THIS **VERSATILE GRAPPLE** bucket is an excellent attachment for work that requires brute force and durability. The bucket features two hydraulic grapples for handling various materials and demolition waste

Model	1450	1800
Width	1450 mm	1800 mm
Weight	400 kg	450 kg
Volume	360 l	440 l
Product no.	A475400	A466656

## XL DEMOLITION GRAPPLE BUCKET 1450 & 1800

on construction sites. The hydraulic cylinders and hoses are well protected with metal guards. The new 1800 mm and 1450 mm wide models have a very sturdy construction, and they are intended for 700 and 800 series loaders.

### OPTION

- Side plates, kit, for XL grapple buckets A439112

### COMPATIBILITY

	1450	1800
220	✗	✗
225	✗	✗
423	✗	✗
520	✗	✗
523	✗	✗
528	✗	✗
530	✗	✗
635	+	+
635i	+	+
640	+	+
640i	+	+
645i	+	+
650i	+	+
735i	✓	+
754	✓	+
750	✓	+
755i	✓	+
760i	✓	+
845	✓	✓
850	✓	✓
855i	✓	✓
860i	✓	✓
e513	✗	✗
e527	✗	✗



Photo: Riku Laukkanen

THIS IS AN **IDEAL** attachment for snow removal on artificial turf arenas. The angle of the blade and the gentle rubber material are both optimized for the purpose, and the attachment works well on different artificial turf materials. The blade does not hit the turf vertically, but it is almost horizontal to the surface. This snow shovel

Working width	3000 mm
Turning angle	±30°
Weight	270 kg
Product no	A456433

## ARTIFICIAL TURF BLADE 3000

style solution makes the Artificial Turf Blade extremely light to push on the turf. The attachment is equipped with a floating system with three different positions: free floating, sideways floating ± 10°, and rigid position. Hydraulic blade turning (±30 degrees) and support wheels come as standard.

### COMPATIBILITY

- ✓ The Artificial turf blade 3000 is compatible with all Avant series 200-800 loaders



## BIG AND ROBUST

The new 855i boasts the lifting capacity, height, and pulling force of the 800 series, but at a significantly lower price than the two-speed 860i.

## RAW POWER, SMOOTH RIDE

Avant's powerhouse 860i loader now has a more budget-friendly sibling: the single-speed 855i. This new model is ideal for various environments from construction sites to farmyards.

### What is the new 855i model all about?

"It is Avant's most powerful loader model – the perfect choice for Avant users who demand strong lifting capacity and lifting height but don't want to pay extra for speed if they don't need it", says **Tuomas Färilä**, Commercial Product and Sales manager at Avant Tecno.

The robust and stable Avant 855i excels in environments like construction sites or farmyards, where heavy lifting over short distances is the norm.

### Single-speed savings

The Avant 855i shares the 860i's Kohler KDI engine, pump package, and electrical and mechanical components. The

key difference lies in the single-speed Poclain MSE05 drive motors. Their simpler design makes the 855i significantly more affordable than the two-speed 860i.

While maintaining the same lifting capacity and height as the 860i, the 855i also mirrors its work hydraulics power, external dimensions, and available options. With a maximum speed of 15 km/h, it's perfectly suited for short-distance hauling, especially with heavy loads. The tractive force with standard tires is a substantial 1570 kp. Importantly, the Avant 855i meets the stringent Stage V emission standards.

The 855i's competitive price point allows buyers to invest more in work attachments and accessories, boosting efficiency and comfort. ■

### AVANT 855i

- **Lifting capacity:** 1900 kg
- **Lifting height:** 3.5 m
- **Engine power:** 56 hp / 42 kW
- **Driving speed:** 15 km/h
- **Auxiliary hydraulics:** 80 l/min
- **Pulling force:** 1570 kp



Read about Avant 855i & Avant 845, the new single-speed version of Avant 850 aimed at Stage 3B markets!

# MODERN MAINTENANCE AT THE HISTORICAL WIDOOIE CASTLE ESTATE



In the rolling landscape of Tongeren, Belgium, lies the Widoie Castle Estate, a historical gem with its roots dating back to the 9th century. The manager of this expansive estate respects functional, efficient, innovative and reliable machinery. His loyal allies? Three Avant loaders assisting him daily in the maintenance and management of the land. →





**WIDOOIE IS TRULY** an estate that combines historical heritage and a vision for the future. Castle owner, knight, and manager of the estate **Norbert de Schaetzen van Brien** inherited his love for land and nature management from his grandfather. Over the years, he transformed the estate from an open grassland into an ecological park with carefully planted trees, paths, and hedges.

This park not only plays a role in preserving biodiversity but also serves as a strategic buffer against potential encroachments into the natural areas. An immense maintenance project like this requires thoughtful mechanization, and that is where Avant technology comes into play. Norbert uses the articulated loaders for a variety of tasks: from mowing and hedge trimming to moving trees and lifting heavy loads.

Norbert is no stranger to the world of agricultural and maintenance machinery. As a former importer of John Deere and developer of agricultural machines, he has a keen eye for functionality and reliability. In his search for an efficient,

multifunctional machine for the estate, he quickly turned to Avant.

#### Intensive work requires top machinery

Each day for Norbert starts with a look at the estate: what maintenance tasks are on the agenda? The machines are indispensable in his daily routine.

“The machines run here every day, from morning till night,” says Norbert. “It’s the combination of Avant with other machines – like our crane and Unimog – that allows us to maintain the estate properly.”

Norbert wants his machines to be not only functional but also efficient and sustainable. Thanks to the hydrostatic drive of Avant, he can precisely adjust the speed and power to the task without unnecessary fuel consumption. This makes the machines not only fuel-efficient but also suitable for long-term and intensive use. Additionally, maintenance plays a significant role.

“Every three years, we get a new Avant, mostly due to depreciation, but also because technology is advancing,” Norbert explains. “The latest models are always just a bit better and more efficient than their predecessors.”

#### A man with a mission

Norbert de Schaetzen van Brien is a visionary thinker. Besides maintaining the estate, he considers the future of land management and mechanization. In the past, he even developed machines himself and still works on new ideas.

His involvement with Avant is no coincidence: he deliberately chose a machine that combines innovation and reliability. His experience in agricultural mechanization confirmed that choice, and to this day, he is convinced that Avant is the best solution for his estate.

“My body no longer allows me to do heavy work,” says Norbert with a smile. “But thanks to these machines, I can still manage the estate the way I want. That keeps me young.” ■

## AN AVANT FOR EVERY TASK

Over the years, the Avant fleet at the estate has grown. Norbert de Schaetzen van Brien now works with three models: the 635, the 760i, and his newest addition, the 855i.

#### Avant 635

The faithful workhorse for daily tasks for many years, such as mowing the expansive grounds. With various attachment mowers, this machine ensures the lawns are always perfectly maintained.

#### Avant 760i

Purchased when the 635i reached its limits. The larger machine provided more stability and power, which proved especially useful when trimming the impressive kilometers-long hawthorn hedges around the estate.

#### Avant 855

The newest addition is used for heavier tasks, such as moving large trees. “Previously, we needed a truck to move trees 15 to 16 meters tall. Thanks to the larger wheels and greater lifting capacity, we can now do that with the 855i. It saves both time and money.”



## QUALITY & PRACTICALITY

With an engineering mindset for mechanization, castle owner Norbert de Schaetzen van Brien wants his machines to be efficient, sustainable, reliable, and easily maintainable.



## PERFECT FOR HEAVY TASKS

The new Avant 855i is used for heavier tasks, such as moving large trees. “Previously, we needed a truck to move trees 15 to 16 meters tall. We can now do that with the 855i. It saves both time and money.”

## 3 CORE BENEFITS OF AVANT ON WIDOOIE ESTATE

#### Full Hydraulic Drive

Unlike many competitors still using axles and mechanical transmissions, Avants have four separate hydraulic motors. This ensures optimal traction also on uneven terrain.

#### Fixed Articulated Steering

The articulation on Avant is fixed, which means the loader remains more stable when turning and loading. Other machines with floating articulation can tip more easily when unevenly loaded, while Avant adapts to the terrain.

#### Compact and Versatile

With a wide range of attachments, a single Avant loader can perform various tasks from mowing and trimming to earthmoving and transporting heavy materials. This makes it the ideal all-rounder on an estate with a complex structure like Widoie.



# A NEW SPLENDOR FOR A HISTORIC VILLA

Villa Linnunlaulu, one of the most well-known villas in the capital of Finland, is set to undergo a thorough restoration. Leguan 225 joins the project.

**BUILT IN** the late 1800s, Villa Linnunlaulu in Helsinki once served as a gathering place for many famous Finnish artists and writers. The villa represents the ornate wooden construction typical of its era, and it still retains original interior elements such as decorative ceiling paintings and beautiful tiled stoves.

Construction company Finnralia has begun preparations for the renovation of the historic villa, garnering widespread interest among the local community and construction professionals alike. The restoration of the protected building aims to carefully preserve its original architecture, historical features and cultural heritage.

## Renovation preparations with Leguan 225

The renovation project began last fall, with the initial phase focusing on supporting the severely damaged structures of the overhanging terraces and other preparations to ensure the building could endure the winter before the main

renovation next spring. The Leguan 225 spider lift proved to be an effective and safety-enhancing partner throughout the project.

“In this building, the overhanging terraces were practically on the verge of collapse, and stepping on them before adding support structures would have been life-threatening. The terraces are also present on two floors, and especially on the facade side, the height from the ground exceeds 10 meters. Without the Leguan, supporting the facade structures would have required nearly a week of work just to set up various scaffolds before we could begin the actual work,” explains **Vilja Schepel** from Finnralia.

Renovating a historically significant site is a vast and years-long project. The goal is to preserve as much of the existing structures as possible while ensuring

that the result is healthy and will remain usable for the next hundred years. “The Leguan has truly been an indispensable tool for us in this project. Its all-terrain capability and the very small footprint of its wide track platform have

## “I’VE TRIED THE REST, AND NOW I’VE TRIED THE BEST.”

**David Myers**  
Finnralia Oy

allowed us to work around the building effortlessly. We’ve been able to drive the lift to otherwise very hard-to-reach areas, and thanks to its large side reach, we’ve been able to work on entire sides at a time from a single setup spot without constantly moving the lift and thus

## CONSTRUCTION EXPERTS

David Myers and Vilja Schepel are experienced Avant users, and that is where their interest in trying out the Leguan started.

## FINNRALIA OY

- A Finnish construction company established in 2013.
- Led by Australian-born carpenter David Myers and master builder Vilja Schepel. The team has decades of honed expertise in the field.
- Renovation and restoration of old wooden buildings has significantly enhanced the company’s reputation in the industry.
- Familiar to the Finnish public from TV productions “Huvila ja Huussi” and “Kotoisa.”

damaging the surrounding terrain,” says Vilja Schepel.

**David Myers**, the lead carpenter of the project, is highly satisfied with the Leguan. Thanks to its ease of use and versatility, the first phase was completed faster than anticipated.

“In my 45 years of experience, I’ve worked with almost all types of lifts and various manufacturers. I can honestly say that the Leguan is by far the easiest to operate, and I can recommend it without reservation to anyone in the construction industry who needs a versatile lift. I’ve tried the rest, and now I’ve tried the best.”

Safely winterized, Villa Linnunlaulu is now ready for the next renovation phase. ■



WATCH THE  
TESTIMONIAL VIDEO



# YEAR-ROUND WORK FOR KRAKOW'S BEAUTY



Often regarded as the Crown Jewel of Poland, Krakow regularly requires significant renovations and maintenance to preserve its historical image. Caring for the city's infrastructure, RDM Śródmieście trusts agile Avant loaders.

**FOR YEARS,** RDM Śródmieście Sp. z o.o. has been caring for the infrastructure of one of the most picturesque cities in Poland. Although beautiful, Krakow is a city of unique character and can prove to be challenging. Its traditional streets, narrow passages, and numerous historic

squares create challenging working conditions unsuitable for large construction machines. This is why the construction and maintenance company RDM Śródmieście has chosen Avant loaders – agile and compact, yet incredibly powerful.



"We use various excavators. They're good, but the problem is their size. That's why they're not suitable for small tasks such as working on sidewalks or building driveways. We still use them, but when we will eventually replace them, we'll definitely go for Avant," says **Tomasz Mach**, Equipment and Transport Base Manager at RDM Śródmieście.

Avant's compact size, combined with precise control of the attachments, allows for maneuvering even in narrow spaces. The versatility of Avant is invaluable in demanding locations abundant in the 'City of Kings'.

"Right now, we're working at the Wawel Royal Castle, and this is where Avant comes into play. We're laying roads, paving, and building bike paths – Avant really shines in these tasks."

## Constant but comfortable work

Due to their exceptional versatility and mobility in hard-to-reach places, Avant loaders proved to be the perfect choice for RDM Śródmieście.

"In the winter, we clear snow from squares, and in the summer, we carry out

road repairs. That's exactly why we bought our Avant. It is at work all year, from Monday to Friday," says Tomasz Mach.

RDM Śródmieście purchased their first Avant 423 model with a versatile 4-in-1 bucket that significantly improved the quality and comfort of their work. Less than two years later, they got an Avant 755i equipped with a heated GT cab, air conditioning and a road traffic light kit.

"The GT cab provides excellent visibility, and our team really likes it. When we purchase our next Avant, we will once again opt for a model with a fully enclosed cab and air conditioning because it is simply the best option."

## Most important: Reliability

Comfort and efficiency are some of the key advantages that make Avant so highly valued by the operators at RDM Śródmieście. But what feature left the greatest impression on the team?

"Versatility, mobility, and especially reliability. Nothing ever goes wrong or breaks down. The machine works continuously across various tasks. It's a hassle-free piece of equipment," Tomasz Mach says. ■

## ATTACHMENTS FOR ALL TASKS

"We use the Pallet fork for unloading paving stones, curbs, and transporting materials, while the 4-in-1 bucket is used for concrete, substructure, and stone transport. You could say that we use them for everything," says Tomasz Mach from RDM Śródmieście.



## RDM ŚRÓDMIEŚCIE SP. Z O.O.

- A company based in Krakow, Poland.
- Started in the 1990s, experience across multiple industries.
- Specializes in road construction and maintenance, public square and sidewalk repairs, installation of sewage and water systems, as well as asphalt laying and road maintenance.





In a few years, there will be three Avant Centers in Estonia.

# AVANT CENTER SAUE OPENED IN ESTONIA

**AVANT LOADERS HAVE** been sold in Estonia, in the Baltics, for three decades. In September 2024, the country's first Avant Center, owned by Sami Masinakeskus OÜ, was opened in Saue, south of the capital Tallinn. They focus on selling Avant products and Sami's own products, which include various road maintenance machines.

"We don't want to be a department store with a lot of brands. This way, our salespeople know how to sell the machines they are selling. They know what the customer needs and know the product properly," says **Renee Möttus**, CEO of Sami Masinakeskus

and Director of the Avant Center.

The elegant and modern 2,500m<sup>2</sup> premises include sales, maintenance, and spare parts services. In the demonstration and training hall, Sami trains people from the entire Baltic region.

The location along the Via Baltica is strategically important. Other Avant sales outlets are in Tartu and Pärnu, and they also plan to build their own Avant Centers.

"Tartu will probably come in 2026 and Pärnu in 2027. The service network will also expand around the country in the future," says Renee Möttus.



# PRESENCE IN BRAZIL STRENGTHENING FAST



The team of Avant Tecno do Brasil Ltda is continuously growing.

**AVANT TECNO DO** Brasil Ltda has successfully homologated Avant loaders in Brazil, marking a significant milestone on their journey. The Brazilian team in São Paulo has expanded, and the sales company has actively participated in various industry fairs. Additionally, Avant Tecno do Brasil has officially started sales operations through their distributor, MPM Tratores, in the southern region of the country.

With this momentum, Avant is now reaching new market segments across Brazil. Demos are leading to sales, with their success percentage being an incredible 100%. Avant's low fuel consumption, operational costs, and quality of work have proven to be important to Brazilian customers. Property maintenance is expected to become a

major customer segment, and a single purchase of 66 machines for a city consortium in southern Brazil serves as an example of the market size.

"We are thrilled to witness the milestones we have achieved in Brazil, marking a pivotal moment in our expansion. This achievement reflects Avant's commitment to innovation, collaboration with local partners, and the outstanding efforts of our dedicated local team. With the promising market potential that we have observed in Brazil's infrastructure, industry, and agriculture sectors, we are confident that Avant's versatile solutions will play a key role in boosting productivity and meeting market demands across the country", says **Jere Pitkänen**, Managing Director of Avant Tecno do Brasil Ltda.



# NEW STATE-OF-THE-ART HEADQUARTERS FOR AVANT TECNO UK

**IN NOVEMBER 2024**, Avant Tecno UK unveiled its new multi-million-pound headquarters in Bury St Edmunds, marking a significant milestone in Avant's growth and commitment to its UK operations.

"This is a momentous occasion for Avant Tecno UK and our incredible team," said **Raimo Ala-Korpi**, Managing Director of Avant Tecno UK, at the grand opening. "The new headquarters is not only a symbol of our growth but also a stepping stone for our future aspirations."

Established in 1999 and previously operating near Thetford, Avant Tec-

no UK had identified the need for a larger, modern facility. Designed to support the operations and meet the increasing demand, the new 3,000m<sup>2</sup> purpose-built facility includes modern office spaces, a showroom, dedicated training facilities, a warehouse with automated technologies, and a technical workshop.

"This investment is an opportunity to strengthen our dealer network, provide world-class training for end-users, dealers and staff, and continue delivering cutting-edge solutions to our customers," said Raimo Ala-Korpi.



The new spaces incorporate features that enhance efficiency, innovation, and sustainability.



**AVANT**

# AVANT. FROM FINLAND.

Avant loaders are built to withstand time and demanding conditions. Experience the power of a reliable machine, packed into a truly compact size.



Avant Tecno designs and manufactures all Avant loaders in Ylöjärvi, Finland. Finnish Avant quality and innovation are valued in over 70 export countries.

[AVANTECNO.COM](http://AVANTECNO.COM)

